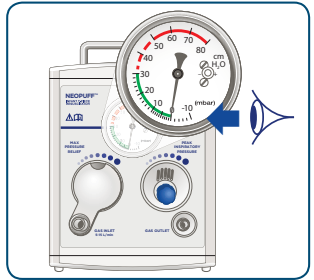


1 Set-Up

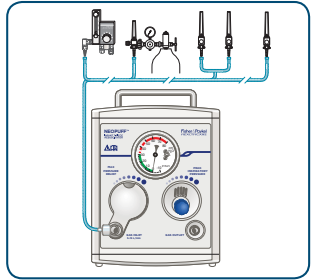
The following procedure should be carried out prior to every use of the Neopuff to ensure that the device is functioning correctly.

- 1 Check manometer reads zero with no gas flow. If not, the manometer requires calibration (refer to section 3.3.4 of the Technical Manual).



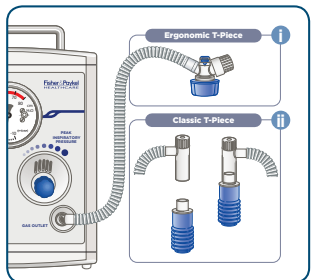
2 Connect Gas Supply

Connect an oxygen or blended oxygen/air supply to the gas inlet port using the Gas Supply Line.



3 Connect T-Piece Circuit

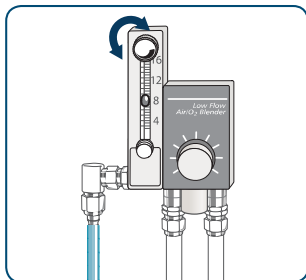
- Connect the T-Piece Circuit to the gas outlet port.
- If using Ergonomic T-piece **i** leave blue cap in place on the T-piece circuit or connect Test Lung to T-piece circuit. If using Classic T-piece **ii**, connect Test Lung to T-piece circuit. Before use, inspect Test Lung for signs of damage such as discoloration



4 Check Settings

Adjust the gas supply to desired flow rate between 5 and 15 L/min.

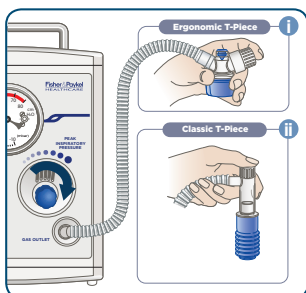
Note: Ensure the oxygen concentration of an oxygen/air supply is either monitored using an oxygen analyzer or preset using oxygen/air flow rate graphs.



5a To Check Max Pressure

Occlude PEEP¹ cap and turn PIP² control fully clockwise, until the knob doesn't turn anymore. (i or ii)

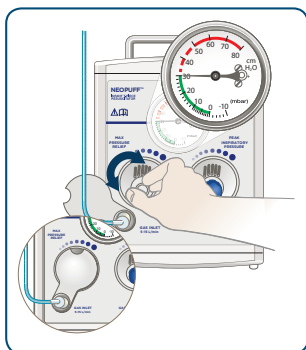
1. Positive End Expiratory Pressure
2. Peak Inspiratory Pressure



5b Adjust max pressure control knob clockwise or counterclockwise to set desired max pressure.

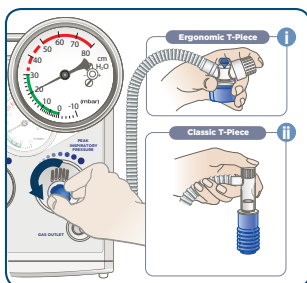
Note:

- The factory setting of the Max Pressure Relief is 40 cmH₂O [mbar].
- The Max Pressure Relief valve acts as an overall limit on the achievable circuit pressure. Resuscitation above 40 cmH₂O [mbar] cannot be achieved unless the Max Pressure Relief valve is adjusted.



6 To Set PIP

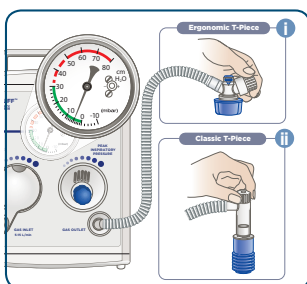
While still occluding the PEEP cap, turn PIP control knob counterclockwise until the desired peak inspiratory pressure is set. (i or ii)



7 To Set PEEP

Adjust PEEP cap to the desired PEEP level.

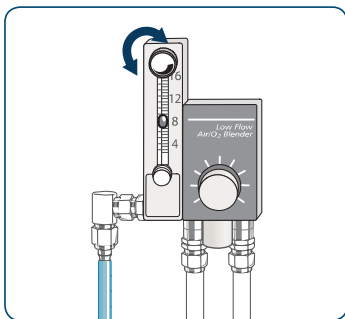
Turn off gas supply and remove Test Lung from T-Piece. Ensure that the rigid plastic connector of the Test Lung is also removed from the T-Piece before attempting to connect a mask or endotracheal tube. Failing to do so may cause unacceptable delays during patient resuscitation. (i or ii)



This swingtag is only to be used as a guide to set-up. Always read and understand all user instructions for each component before use.

II To Resuscitate

- 8** Adjust gas supply to the desired flow rate.

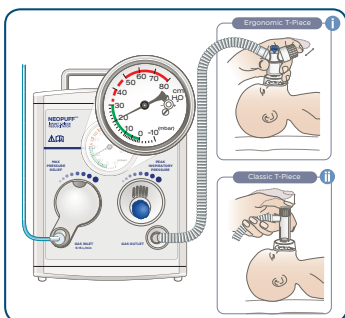


- 9** Fit T-Piece to neonatal resuscitation mask and place over the baby's mouth and nose.

Resuscitate by placing and removing finger or thumb over the PEEP¹ cap to allow inspiration and expiration.

(i or ii)

1. Positive End Expiratory Pressure



- 10** OR Fit T-Piece to the endotracheal tube.

Resuscitate by placing and removing finger or thumb over the PEEP¹ cap to allow inspiration and expiration.

(i or ii)

1. Positive End Expiratory Pressure

